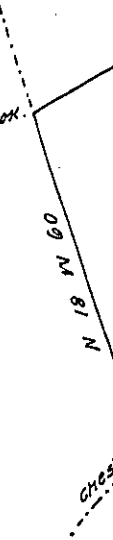


George Dietz



No. 2244 ~~113~~

Franklin County

John Greer.

163 & 114 P^s & all^{cs}

(with report)

Situat
 of Spr
 Original
 No. 222
 for 50
 29" No

To Go
 Surve
 This
 thought
 draft

IN TES

Rec^d 20 May 1830

Actual survey

fees 9.00